

The Nilfisk VL500 Wet and Dry Series

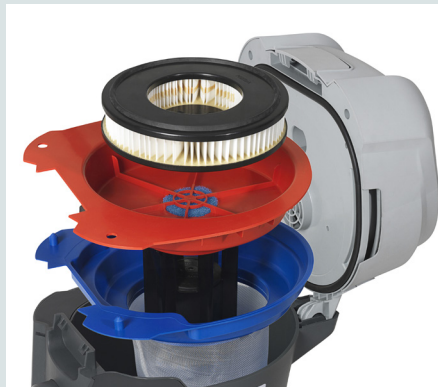




VL500 35 litre model



Big areas to clean? Try the squeegee accessory for the VL500



Dual filtration enables you to clean both wet and dry without changing filters



Easy and fast emptying of the VL500 container thanks to the unique Ergo Tipping system. Emptying the machine without having to remove the motor head makes daily cleaning easier and safer

Wet & dry vacuum cleaners for all applications

The VL family of wet & dry vacuum cleaners contains three variants 35, 55 and 75 litre containers. Whether you need to clean huge areas or small spots, wet, dry or a combination - we have the machine for you.

The VL wet & dry series from Nilfisk is designed and developed to the highest standards. By partnering with our customers and users we have achieved a wet & dry vacuum cleaner that meets the requirements of the most demanding end users. Combined with Nilfisk service and support, our wet & dry portfolio provides you with a reliable, high performance cleaning solution that is easy to operate with an attractive cost of ownership.







The VL500 are ideally suited for hotels, contract cleaners, education, exhibition and conference centers as well as public buildings, manufacturing and industrial applications.

VL500 makes daily operation easy, fast and safe

- By transferring the weight as you lift the container, the Nilfisk Ergo Tipping system enables you to empty a completely filled container of fluid without excessive effort.
- Emptying the container without having to remove the motor head makes operation fast and easy, without risk of damage to critical components.
- With the dual filtration system, the VL500 can be used in both wet and dry environments without the need to change filters for different applications.
- The unique design of the VL500 with single latch locking is not only signaling quality and innovation but also high performance and reliability.



Application filter configuration suggestions

| | Mesh wet filter | Dry cartridge filter | HEPA H13 | Cloth wet & dry filter | Fixed floater | Detachable floater |
|--|---|---|---|---|---|---|
| |  |  |  |  |  |  |
| Application | | | | | | |
| General light cleaning e.g. kitchen spills | | | | X | X | |
| Floor restoration e.g. foamy substances | X | X | | | | X |
| Very dry & dusty e.g. wood shops | | | X | X | | X |
| Very wet e.g. flood situations | X | X | | | | X |
| Different/changeable environments | X | X | | | | X |
| Production | X | X | (X) | | | X |
| Hotels | X | X | | | | X |

The reliability and performance that our customers demand

The motor head remains closed and in place during container emptying



Wet stack filter protects motor from foam ingress



Stainless steel tubes prevent corrosion and wear



Choose from 35, 55 and 75 litre versions



Dual or single motor



Dual filtration for both wet and dry cleaning



Fail safe filter design makes operation easier



Ergo tip makes emptying the container easy and effortless



Features like the motor head, push handle and container locking mechanisms are designed for single handed use

Technical specifications

| Description | Unit | VL500 35 | VL500 55 | VL500 75 |
|------------------------------|-----------------|------------------|------------------|------------------|
| Item no. | | 107405171 | 107405173 | 107405174 |
| IP protection class | | IP24 | IP24 | IP24 |
| Rated power | W | 1250 | 1250/2400 | 1250/2400 |
| Max power | W | 1350 | 1350/2500 | 1350 |
| Suction power end of tube | W | 250 | 200 | 200 |
| Airflow | l/sec. | 48 | 48/72 | 48/72 |
| Vacuum at nozzle | kPa | 20 | 20/21 | 20/21 |
| Sound pressure level BS 5415 | dB(A)+/-2 | 62 | 64/66 | 64/66 |
| Sound power level IEC 704 | dB(A)+/-2 | 81 | 82/84 | 85/84 |
| Container capacity | litre | 35 | 55 | 75 |
| Cable length | m | 10 | 10 | 10 |
| Hose length | m | 1.9 | 2.5 | 2.5 |
| Main filter area | cm ² | 1051 | 1840 | 1840 |
| HEPA filter area | cm ² | 2070 | 4410 | 4410 |
| Length x width x height | cm | 46x42x73 | 84x62x89 | 84x62x103 |
| Weight | kg | 12.5 | 26.5/27.5 | 26.5/28.5 |
| Filter type: | | | | |
| Sack filter | | | | |
| Dual filter | | • | • | • |
| HEPA filter | | • | • | • |

Specifications and details are subject to change without prior notice.

• = Standard feature

Nilfisk Ltd.

Nilfisk House · Bowerbank Way · Gilwilly Industrial Estate · Penrith · Cumbria · CA11 9BQ
 Tel.: 01768 868995 (UK) · 01 2943838 (IE)
 Email: sales.uk@nilfisk.com (UK & IE)
 www.nilfisk.co.uk · www.nilfisk.ie

