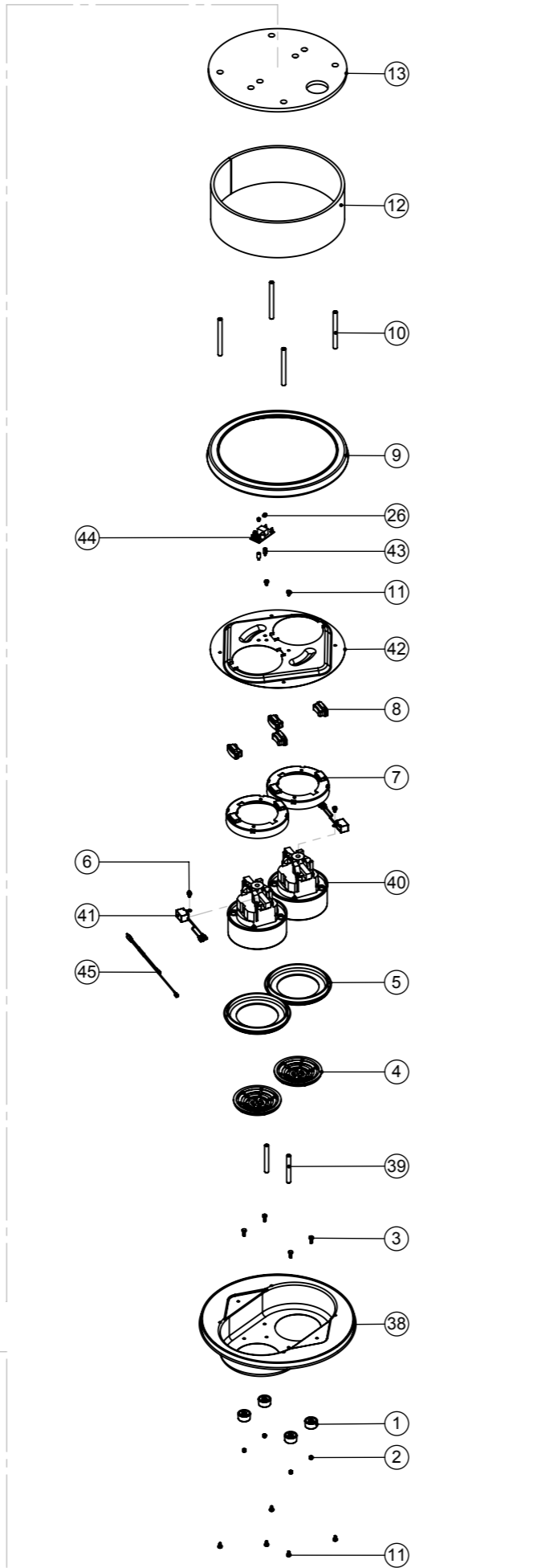
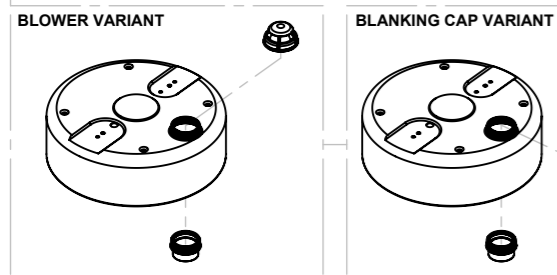
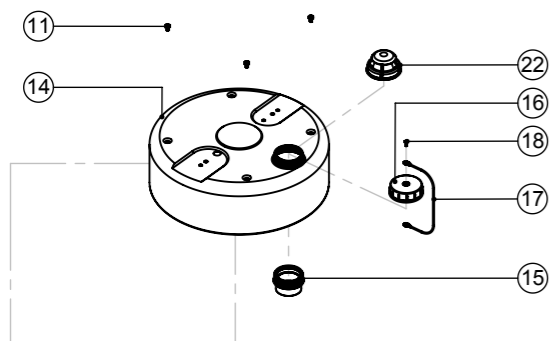
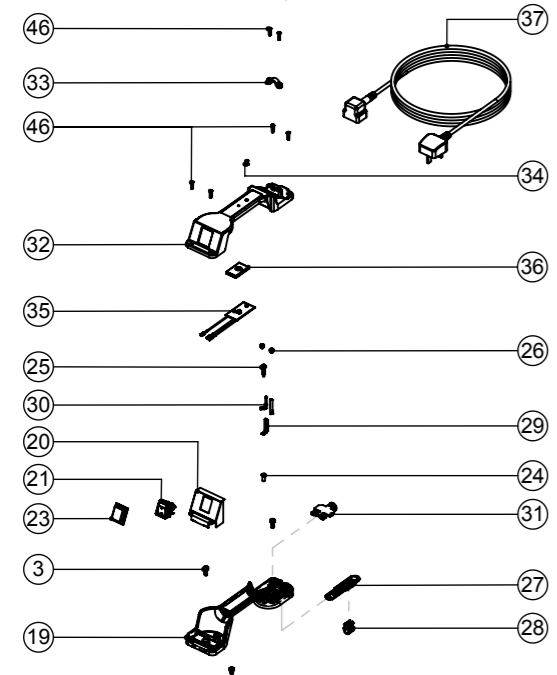
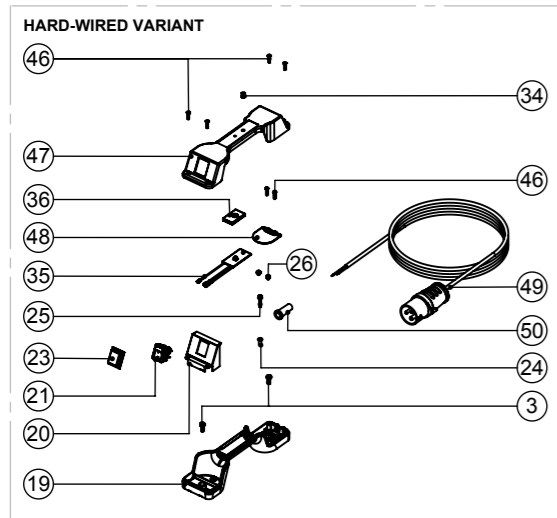


# Numatic International Spare Parts

**Model No:** HEAD STYLE 14HZ DUPLEX ASSEMBLY 2 STAGE 1 SPEED EXPLODED

Internal Code: N/A  
 DRAWING: DRW-19721 ISS:A04  
 PRO 12/08/2015

**Models:**



# Numatic International Spare Parts

**Model No:** HEAD STYLE 14HZ DUPLEX ASSEMBLY 2 STAGE 1 SPEED EXPLODED

| POS. | ITEM NO. | DESCRIPTION   | QTY. | COMMENTS             |
|------|----------|---|------|----------------------|
| 1    | 206033   | PLASTIC FOOT  | 4    |                      |
| 2    | 219076   | M5 NYLON INSERT NUT   | 4    |                      |
| 3    | 219045   | M5 X 16MM LONG POZI PAN SEMS SCREW                            | 6    |                      |
| 4    | 227887   | FAN GUARD   | 2    |                      |
| 5    | 202005   | MOTOR BOTTOM GASKET   | 2    |                      |
| 6    | 219858   | M5 x 8MM HEX WASHER FACED TAPFIX (DIN7500D)                   | 2    |                      |
| 7    | 227886   | MOTOR SPACER  | 2    |                      |
| 8    | 229549   | MOTOR MOUNTING RUBBER   | 4    |                      |
| 9    | 202002   | BUFFER GASKET   | 1    |                      |
| 10   | 208002   | 115MM LONG ALUMINIUM SPACER                                   | 4    |                      |
| 11   | 219047   | M5 X 10MM LONG POZI PAN SEMS SCREW                            | 12   |                      |
| 12   | 203003   | SIDE FELT   | 1    |                      |
| 13   | 303027   | TOP FELT PUNCHED  | 1    |                      |
| 14   | 401745   | BLACK HEAD TOP  | 1    |                      |
| 15   | 206005   | AIR OUTLET NECK   | 1    |                      |
| 16   | 206363   | BLANKING CAP  | 1    |                      |
| 17   | 303037   | BLANKING CAP FIXING WIRE                                      | 1    | BLANKING CAP VARIANT |
| 18   | 219301   | No6 X 3/8 INCH LONG POZI PAN SELF TAP SCREW                   | 1    |                      |
| 19   | 320686   | HANDLE BASE MOULDING + INSERTS                                | 1    |                      |
| 20   | 227635   | SWITCH MOUNTING BRACKET (1 SWITCH)                            | 1    |                      |
| 21   | 220552   | RED ROCKER SWITCH (WHITE PRINT)                               | 1    |                      |
| 22   | 604151   | AIR DIFFUSER FOR BLOWER TYPES (NQS)                           | 1    | BLOWER VARIANT       |
| 23   | 206573   | SWITCH COVER (PLUG HANDLE)                                    | 1    |                      |
| 24   | 220078   | BRASS EARTHING SPACER   | 1    |                      |
| 25   | 219274   | M4 X 20MM LONG POZI PAN SCREW                                 | 1    |                      |
| 26   | 219090   | M4 X 8MM LONG POZI PAN SEMS SCREW                             | 4    |                      |
| 27   | 227636   | STRAIN RELIEF   | 1    |                      |
| 28   | 227637   | CABLE CLIP  | 1    |                      |
| 29   | 206563   | EARTH CONTACT PIN   | 1    |                      |
| 30   | 206562   | CONTACT PIN   | 2    | PLUGGED VARIANT      |
| 31   | 227631   | TERMINAL COVER & CLAMP (3 PIN)                                | 1    |                      |
| 32   | 320678   | HANDLE COVER (DRILLED)  | 1    |                      |
| 33   | 227564   | PLUG LOCATION CLAMP   | 1    |                      |
| 34   | 220381   | AMBER LENS  | 1    |                      |
| 35   | 220677   | 230V LOW FLOW INDICATOR DEVICE                                | 1    | 230V VERSION         |
| 35   | 220678   | 115V LOW FLOW INDICATOR DEVICE                                | 1    | 115V VERSION         |
| 36   | 202086   | LOW FLOW PCB MOUNTING GASKET                                  | 1    |                      |
| 37   | 220950   | 12.5M X 1.00MM X 3 CORE NUCABLE ((UK PLUG)                    | 1    |                      |
| 38   | 401371   | BLACK DUPLEX BOTTOM MOTOR HOUSING                             | 1    |                      |
| 39   | 208001   | 80MM ALUMINIUM SPACER   | 2    |                      |
| 40   | 205407   | 240V 2 STAGE THRO FLOW TAPER FAN MOTOR (DL21104)(MARKED 230V) | 2    | 230V VERSION         |
| 40   | 205405   | 120V 2 STAGE THRO FLOW TAPER FAN MOTOR (DL21101)              | 2    | 115V VERSION         |
| 41   | 220682   | SUPPRESSOR ASSY WITH 2.48 TERMINALS                           | 2    |                      |
| 42   | 401369   | BLACK DUPLEX TOP MOTOR HOUSING                                | 1    |                      |
| 43   | 219414   | NYLON PILLAR  | 2    |                      |
| 44   | 220555   | 230V DELAY START MODULE                                       | 1    | 230V VERSION         |
| 44   | 220556   | 115V DELAY START MODULE                                       | 1    | 115V VERSION         |
| 45   | 230075   | DUPLEX LAMB MOTOR BIMETALLIC OVERLOAD ASSY                    | 1    |                      |
| 46   | 219107   | No6 X 5/8 INCH LONG POZI PAN PLASTITE SCREW                   | 6    |                      |
| 47   | 320827   | HANDLE COVER (DRILLED/HARD WIRED)                             | 1    |                      |
| 48   | 220131   | CABLE CLAMP   | 1    |                      |
| 49   | 220911   | 12.5M X 2.5MM X 3 CORE CABLE (32AMP INDUSTRIAL PLUG)          | 1    | HARD-WIRED VARIANT   |
| 50   | 220015   | STRESS RELIEF   | 1    |                      |

FOR WIRING DIAGRAMS PLEASE SEE DOC-21993 (REFER ONLY TO THE LATEST VERSION) OR NUMATIC WEBSITE