

CT/CTD900

Wet, Dry and Extraction Vacuum



Numatic

The largest of our all-purpose 4-in-1, the CleanTec 900 provides tough construction and huge capacity but just as easy to handle compared to any of the CleanTec range.

The heavy-duty Structofoam construction in both head and body is rugged yet light in weight, and our tank within a tank design is simple, clean and efficient providing an easy to fill and quick to change system.

The power head incorporates the high performance TwinFlo bypass motor and the PowerFlo pump system which injects the cleaning solution deep into the carpets in a continuous deep cleaning cycle.

Our tank within a tank design is simple, clean and efficient providing an easy to fill and quick to change system.

All Purpose 4-in-1

Wet, spray extraction for carpets, upholstery and valeting.

Tank Within a Tank

Simple, clean and efficient. This unique design provides an easy to fill and quick to change system.

Built to Last

Heavy-duty, Structofoam construction to endure years of industrial use.

User Comfort

Large rear wheels provide stability during transportation.

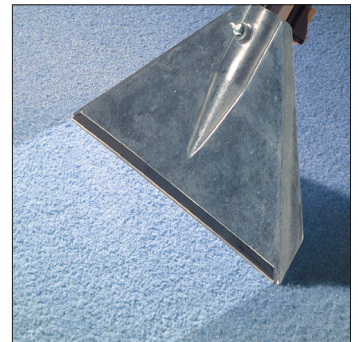
Clean Emptying

Fitted with unique tipper handle, providing simple and clean emptying.

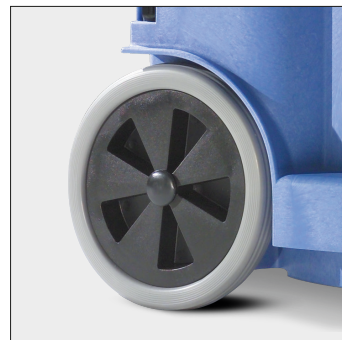
Kit A41A



Tank within a Tank



Fishtail Extraction



Large Rear Wheels



Tipper Handle for Clean Emptying

Specifications

Model	Capacity	Motor	Suction H ₂ O	Weight	Power	Dimensions (WxLxH)	Power Cord	Cleaning Range	Kit
CT900	40L (Dry) 32L (Wet)	1000W	2400mm	25.28Kg	230 / 50 / 60 Volts AC/HZ	490x800x880mm	10m	26.8m	A41A
CTD900		1000W x 2		27.78Kg					